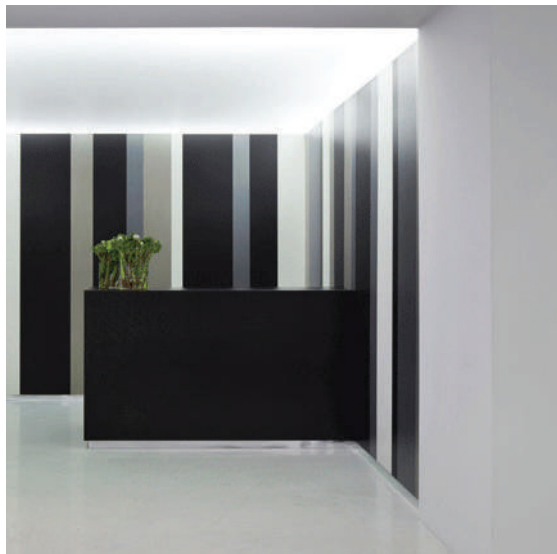
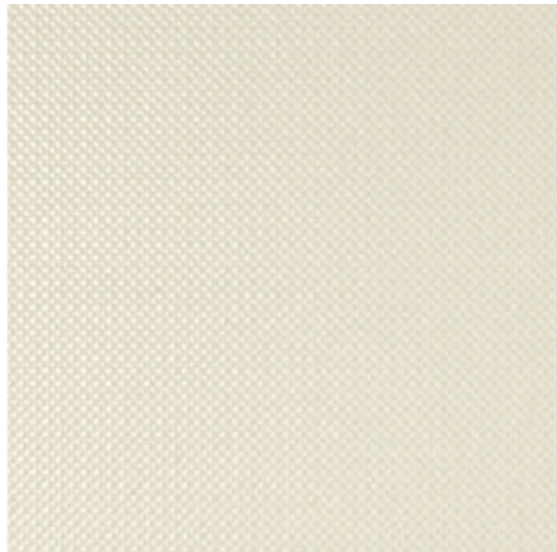


9.1.A

Our EPD Group 4 - Shannon Range are a selection of Ultra-thin - from just 3.5mm - yet so strong it can be laid in 3m x 1m slabs on floors, walls or as an overlay. With low embodied carbon, up to 40% pre-consumer recycled content, flexible sizes and over one hundred colours and finishes, it's time to join the surface revolution. With a LEED and product specific EPD certifications, it's a range perfectly in step with 21st century living.



MOBILE SAMPLE LIBRARY REFERENCE



Lights & Brights
BREEAM/LEED

Natural

Properties


Carbon Offset


Chemical Resistant


Frost Resistant


Thermal Shock Resistant


More Colours Available


BREEAM


EPD GROUP 4
SHANNON


LEED


SKA


ISO 14001


UPTO 40%
Recycled Content

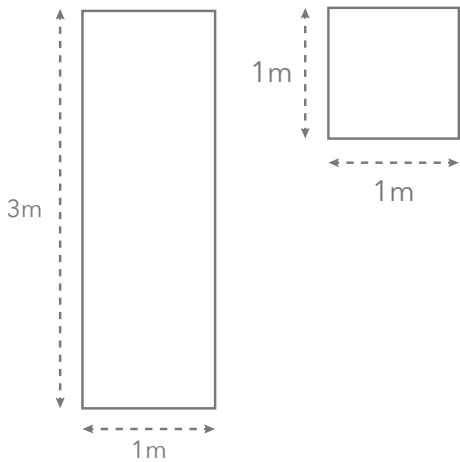

Pre Consumer
Recycled Content

Other formats available

Other finishes available

Sizes available

3.5mm  Wall (with mesh)



www.ecofriendlytiles.co.uk



Eco Friendly Tiles Ltd
Ground Floor, Solon House
40a Peterborough Road
London
SW6 3BN
0844 980 2233
info@ecofriendlytiles.co.uk



This technical information sheet is not a guarantee of performance and is not a warranty, either explicit or implicit. Rather, it tries to summarize for the designer, installer or developer the technical data provided to Eco Friendly Tiles by the independent tile manufacturer. This information may not be applicable in all geographical areas. It is the responsibility of those individuals who are referring to this document to independently research and determine which tiles are suitable for a given project according to applicable British or International Standards and any governing legislative requirements. This document cannot be used as expert opinion, evidence or in any legal or administrative procedure unless authorized by Eco Friendly Tiles Ltd.