

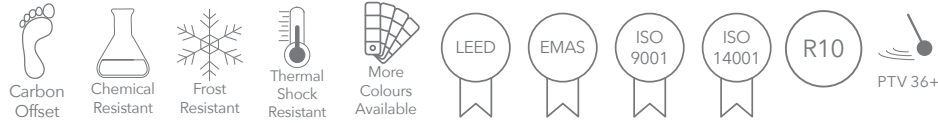
VT.473

Our Cascade Range for Floor & Wall comes in hundreds of different designs, colours, slip ratings and finishes. Much of the range is accredited to rigorous eco-friendly standards (including LEED/BREEAM etc) to help specifiers meet the sustainability goals of their clients.



Natural

Properties



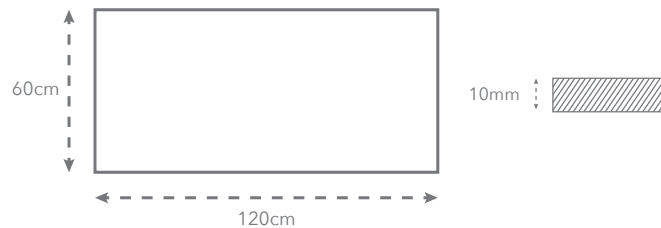
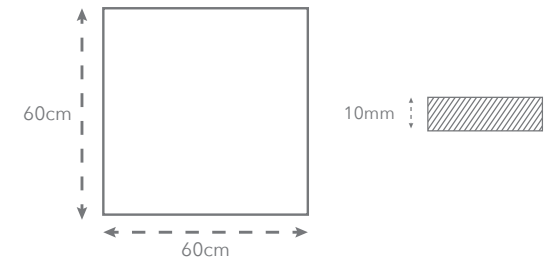
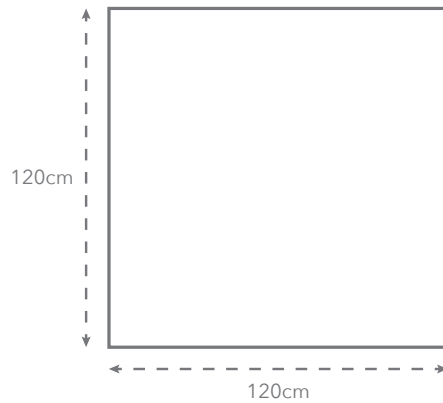
Other formats



Decor

Other finishes

Sizes available



MOBILE SAMPLE LIBRARY REFERENCE
Concrete Look
High Slip
Porcelain



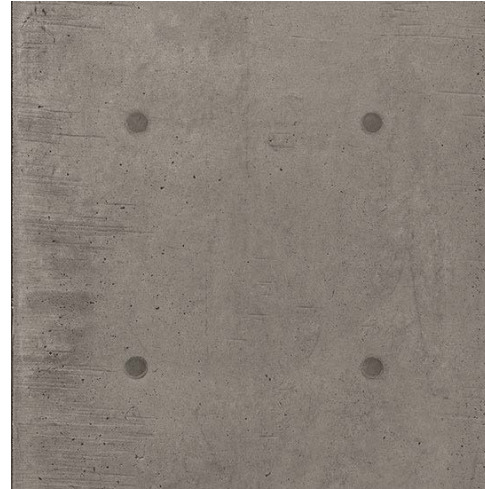
www.ecofriendlytiles.co.uk

Eco Friendly Tiles Ltd
Ground Floor, Solon House
40a Peterborough Road
London
SW6 3BN
0844 980 2233
info@ecofriendlytiles.co.uk

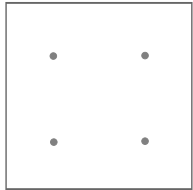
Accents (wall only)

Patterns

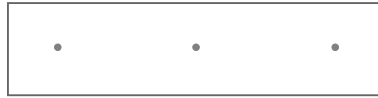
VT.473 is a dark grey washed concrete look porcelain tile with a slip rating of R10, PTV 36+. It comes in three sizes, 60x60cm, 60x120cm and 120x120cm with a thickness of 10mm. As pictured below VT.473 is also available as a wall accent tile with four different formats and the pattern varying between each style. This allows the tile to be continued from floor to ceiling creating, a seamless elegance. For further information, please reference the product code associated with the tile below and our Eco Friendly Tiles member will happily provide you with a product sheet and larger in-situ images.



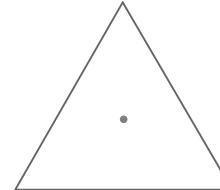
VT.473 (60x604D)



VT.473 60x604D



VT.473 30x1204D



VT.473 604DTRI



VT.473 60x1204D



Technical Specification

Code: VT.473



Eco Friendly Tiles Ltd
 Ground Floor, Solon House
 40a Peterborough Road
 London
 SW6 3BN
 0844 980 2233
 info@ecofriendlytiles.co.uk
www.ecofriendlytiles.co.uk

Physical & chemical properties	Norm/test method	Required Standard	Results
Thickness	EN ISO 10545-2	± 5.0% / ± 0.5mm	Conforms
Straightness of sides	EN ISO 10545-2	± 0.5% / ± 1.5mm	Conforms
Rectangularity	EN ISO 10545-2	± 0.5% / ± 2.0mm	Conforms
Surface Flatness	EN ISO 10545-2	± 0.5% / ± 2.0mm	Conforms
Water absorption	EN ISO 10545-3	≤ 0.5%	≤ 0.5%
Flexion Resistance	EN ISO 10545-4	≥ 35 N/mm ²	≥ 35 N/mm ²
Abrasion Resistance	EN ISO 10545-6	175mm ³	1300 N min.
Crazing Resistance	EN ISO 10545-11	-	Resistant
Frost Resistance	EN ISO 10545-12	UB Min.	Resistant
Resistance to Chemicals	EN ISO 10545-13	GB Min	GB. min
Stain Resistance	EN ISO 10545-14	min Class 3	min. Class 3
Slip Resistance	DIN 51130	-	R10
	BS 7976-2:2002 Pendulum	-	PTV 36+

Certifications



This technical information sheet is not a guarantee of performance and is not a warranty, either explicit or implicit. Rather, it tries to summarize for the designer, installer or developer the technical data provided to Eco Friendly Tiles by the independent tile manufacturer. This information may not be applicable in all geographical areas. It is the responsibility of those individuals who are referring to this document to independently research and determine which tiles are suitable for a given project according to applicable British or International Standards and any governing legislative requirements. This document cannot be used as expert opinion, evidence or in any legal or administrative procedure unless authorized by Eco Friendly Tiles Ltd.