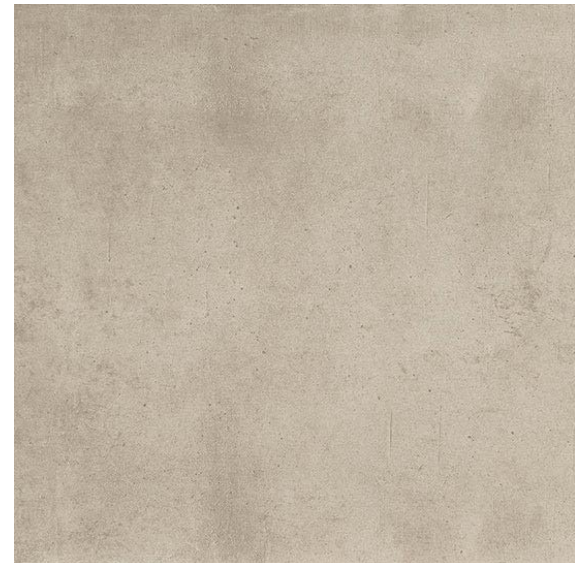


# VT.471

Our Cascade Range for Floor & Wall comes in hundreds of different designs, colours, slip ratings and finishes. Much of the range is accredited to rigorous eco-friendly standards (including LEED/BREEAM etc) to help specifiers meet the sustainability goals of their clients.



MOBILE SAMPLE LIBRARY REFERENCE  
Concrete Look  
High Slip  
Porcelain

## Natural

## Properties

Carbon Offset

Chemical Resistant

Frost Resistant

Thermal Shock Resistant

More Colours Available

LEED

EMAS

ISO 9001

ISO 14001

R10

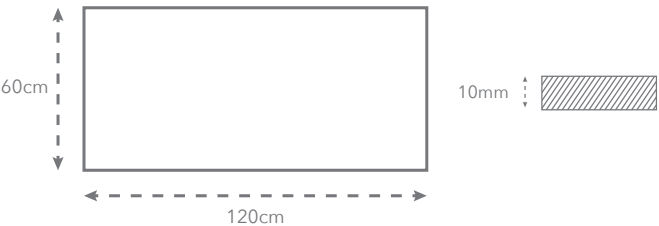
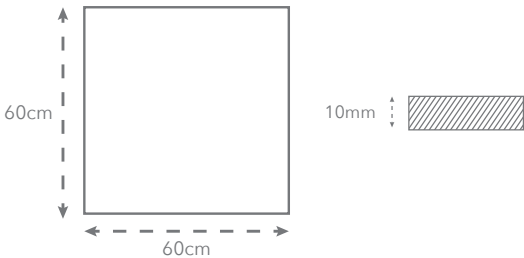
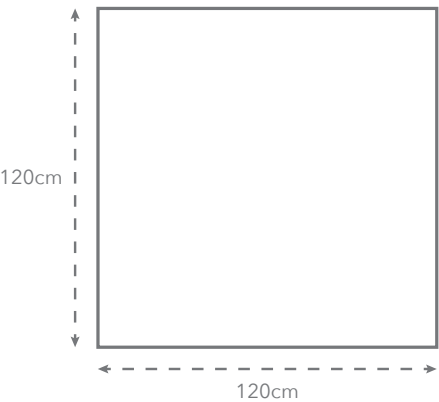
PTV 36+

## Other formats

Decor

## Other finishes

## Sizes available



[www.ecofriendlytiles.co.uk](http://www.ecofriendlytiles.co.uk)

Eco Friendly Tiles Ltd  
Ground Floor, Solon House  
40a Peterborough Road  
London  
SW6 3BN  
0844 980 2233  
[info@ecofriendlytiles.co.uk](mailto:info@ecofriendlytiles.co.uk)

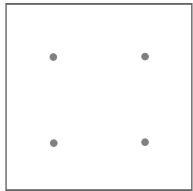
# Accents (wall only)

## Patterns

VT.471 is a greige washed concrete look porcelain tile with a slip rating of R10, PTV 36+. It comes in three sizes, 60x60cm, 60x120cm and 120x120cm with a thickness of 10mm. As pictured below VT.471 is also available as a wall accent tile with four different formats and the pattern varying between each style. This allows the tile to be continued from floor to ceiling creating, a seamless elegance. For further information, please reference the product code associated with the tile below and our Eco Friendly Tiles member will happily provide you with a product sheet and larger in-situ images.



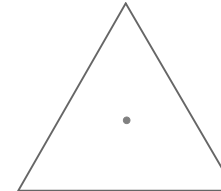
VT.471 (60x604D)



VT.471 60x604D



VT.471 30x1204D



VT.471 604DTRI



VT.471 60x1204D





Physical & chemical properties	Norm/test method	Required Standard	Results
Thickness	EN ISO 10545-2	± 5.0% / ± 0.5mm	Conforms
Straightness of sides	IEN ISO 10545-2	± 0.5% / ± 1.5mm	Conforms
Rectangularity	EN ISO 10545-2	± 0.5% / ± 2.0mm	Conforms
Surface Flatness	EN ISO 10545-2	± 0.5% / ± 2.0mm	Conforms
Water absorption	EN ISO 10545-3	≤ 0.5%	≤ 0.5%
Flexion Resistance	EN ISO 10545-4	≥ 35 N/mm²	≥ 35 N/mm²
Abrasion Resistance	EN ISO 10545-6	175mm³	1300 N min.
Crazing Resistance	EN ISO 10545-11	-	Resistant
Frost Resistance	EN ISO 10545-12	UB Min.	Resistant
Resistance to Chemicals	EN ISO 10545-13	GB Min	GB. min
Stain Resistance	EN ISO 10545-14	min Class 3	min. Class 3
Slip Resistance	DIN 51130	-	R10
	BS 7976-2:2002 Pendulum	-	PTV 36+

UNI EN ISO 14001

CERTIFICATION

SISTEMA DI GESTIONE AMBIENTALE CERTIFICATO

www.ecolabel.it

CE

EN 14411

THE GREEN BUILDING COUNCIL

USGBC

GREEN BUILDING COUNCIL

USGBC

ITALY

UNI EN ISO 9001:2008

CERTIFICATION

SISTEMA DI GESTIONE QUALITÀ CERTIFICATO

This technical information sheet is not a guarantee of performance and is not a warranty, either explicit or implicit. Rather, it tries to summarize for the designer, installer or developer the technical data provided to Eco Friendly Tiles by the independent tile manufacturer. This information may not be applicable in all geographical areas. It is the responsibility of those individuals who are referring to this document to independently research and determine which tiles are suitable for a given project according to applicable British or International Standards and any governing legislative requirements. This document cannot be used as expert opinion, evidence or in any legal or administrative procedure unless authorized by Eco Friendly Tiles Ltd.