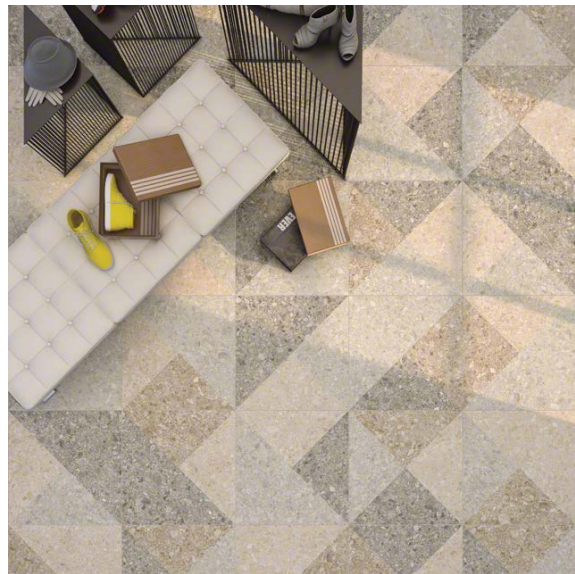


# VT.312

Our Cascade Range for Floor & Wall comes in hundreds of different designs, colours, slip ratings and finishes. Much of the range is accredited to rigorous eco-friendly standards (including LEED/BREEAM etc) to help specifiers meet the sustainability goals of their clients.



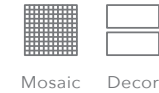
MOBILE SAMPLE LIBRARY REFERENCE  
Concrete Look  
Designer Series  
Porcelain

## Natural

### Properties

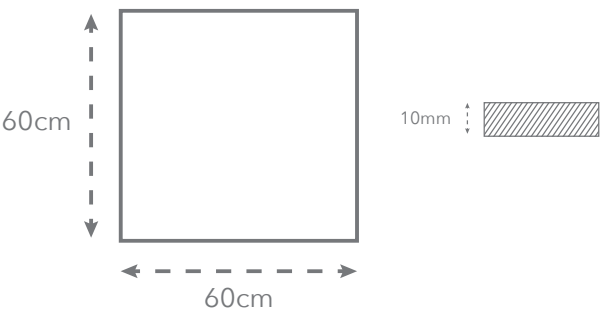


### Other formats



### Other finishes

### Sizes available



[www.ecofriendlytiles.co.uk](http://www.ecofriendlytiles.co.uk)



Eco Friendly Tiles Ltd  
Ground Floor, Solon House  
40a Peterborough Road  
London  
SW6 3BN  
0844 980 2233  
[info@ecofriendlytiles.co.uk](mailto:info@ecofriendlytiles.co.uk)

# Technical Specification

## Code: VT.312



Eco Friendly Tiles Ltd  
Ground Floor, Solon House  
40a Peterborough Road  
London  
SW6 3BN  
0844 980 2233  
info@ecofriendlytiles.co.uk  
[www.ecofriendlytiles.co.uk](http://www.ecofriendlytiles.co.uk)

Physical & chemical properties	Norm/test method	Required Standard	Results
Thickness	EN ISO 10545-2	± 5.0% / ± 0.5mm	± 0.5mm
Straightness of sides	EN ISO 10545-2	± 0.5% / ± 1.5mm	± 0.75mm
Rectangularity	EN ISO 10545-2	± 0.6% / ± 2.0mm	± 0.75mm
Warpage	EN ISO 10545-2	± 0.5% / ± 2.0mm	± 0.75mm
Water absorption	EN ISO 10545-3	≤ 0.5%	≤ 0.5%
Flexion Resistance	EN ISO 10545-4	≥ 35 N/mm <sup>2</sup>	≥ 35 N/mm <sup>2</sup>
Resistance to Surface Abrasion	EN ISO 10545-7	-	4
Coefficient of Linear Thermal Expansion	EN ISO 10545-8	-	< 9*10 <sup>-6</sup> °C
Resistance to Thermal Shocks	EN ISO 10545-9	-	Resistant
Cracking Resistance	EN ISO 10545-11	-	Resistant
Frost Resistance	EN ISO 10545-12	UB Min.	Resistant
Resistance to Chemicals	EN ISO 10545-13	UB Min	Class A
Slip Resistance	DIN 51130	-	R9
	BS 7976-2:2002 Pendulum	-	-

### Certifications



This technical information sheet is not a guarantee of performance and is not a warranty, either explicit or implicit. Rather, it tries to summarize for the designer, installer or developer the technical data provided to Eco Friendly Tiles by the independent tile manufacturer. This information may not be applicable in all geographical areas. It is the responsibility of those individuals who are referring to this document to independently research and determine which tiles are suitable for a given project according to applicable British or International Standards and any governing legislative requirements. This document cannot be used as expert opinion, evidence or in any legal or administrative procedure unless authorized by Eco Friendly Tiles Ltd.